

# RED CARPET COLLECTION 2013

*Chopard*



*Chopard*

# RED CARPET COLLECTION 2013



FESTIVAL DE CANNES  
**Official Partner**



# IN LOVE WITH CINEMA

CANNES AND CHOPARD IS TRULY VERY MUCH LIKE A LONG LOVE STORY.

IT ALL BEGAN IN 1997 WHEN CAROLINE SCHEUFELE, CHOPARD'S CO-PRESIDENT AND ARTISTIC DIRECTOR, MET PIERRE VIOT, WHO WAS AT THE TIME PRESIDENT OF THE FILM FESTIVAL IN CANNES. THAT ALSO HAPPENED TO BE THE YEAR CHOPARD WAS TO OPEN A CHOPARD BOUTIQUE RIGHT ACROSS FROM THE PALAIS DES FESTIVALS ON THE FAMOUS CROISSETTE. FOR CAROLINE, A GREAT LOVER OF THE SEVENTH ART, IT WAS OBVIOUS THAT THE OFFICIAL OPENING SHOULD TAKE PLACE DURING THE FILM FESTIVAL.

NONETHELESS, SHE DID NOT WANT THE BRAND TO REMAIN ON THE SIDELINES, AND THEREFORE MET WITH THE PRESIDENT TO DISCUSS PLANS. AS A RESULT, THE SINGLE EVENT INTENDED TO MARK THE OPENING OF THE CANNES BOUTIQUE IN FACT GAVE RISE TO AN ENDURING PARTNERSHIP WITH THE FESTIVAL BUT ALSO AND MOST IMPORTANTLY, TO THE RELOOKING AND REMODELLING OF THE FAMOUS PALME D'OR TROPHY. EVER SINCE, THE HOUSE OF CHOPARD HAS BEEN PROUDLY MANUFACTURING THIS MOST LONGED-FOR AWARD IN THE WORLD OF CINEMA.







BEAUTIFUL ACTRESSES HAVE LONG BEEN A SOURCE OF INSPIRATION FOR CAROLINE SCHEUFELE. ON THE OCCASION OF THE 60TH FILM FESTIVAL AND THE 10TH ANNIVERSARY OF CHOPARD'S FIRST APPEARANCE AS OFFICIAL PARTNER, THE RED CARPET COLLECTION WAS BORN. A CONSTELLATION OF THE FINEST AND UNIQUE CREATIONS SHOWCASED IN THE RED CARPET BOOK.







THIS YEAR'S COLLECTION PAYS TRIBUTE TO GREAT LOVE STORIES – THOSE SEEN ON THE SILVER SCREEN AS WELL AS ALL THE COUNTLESS OTHERS. CAROLINE SCHEUFELE CHOSE TO FOCUS ON THIS THEME IN DESIGNING SOME OF HER NEW CREATIONS: “LOVE IS UNIVERSAL. IT ILLUMINATES WOMEN’S BEAUTY, LIKE A BEAUTIFUL PIECE OF JEWELLERY. I VERY MUCH WANTED TO PAY TRIBUTE TO THE FINEST SENTIMENTS. THE RED CARPET COLLECTION IS SPARKLING WITH SHIMMERING COLOURS INCLUDING BRIGHT RED ACCENTS LIKE THE FIRE OF PASSION, AS WELL AS HEART-SHAPED PRECIOUS STONES, ONE OF MY FAVOURITE CUTS.”











THIS YEAR MARKS THE 6TH EDITION STARRING 66 UNIQUE  
DESIGNS FOR THE 66TH EDITION OF THE FILM FESTIVAL.  
THE COLLECTION FEATURES ALL THE COLOURS OF THE  
RAINBOW AND DESIGNS EVERY BIT AS VERSATILE AS THE  
HIGHLY TALENTED ACTRESSES FROM ALL OVER THE WORLD  
WHO COME TO CANNES EVERY YEAR.



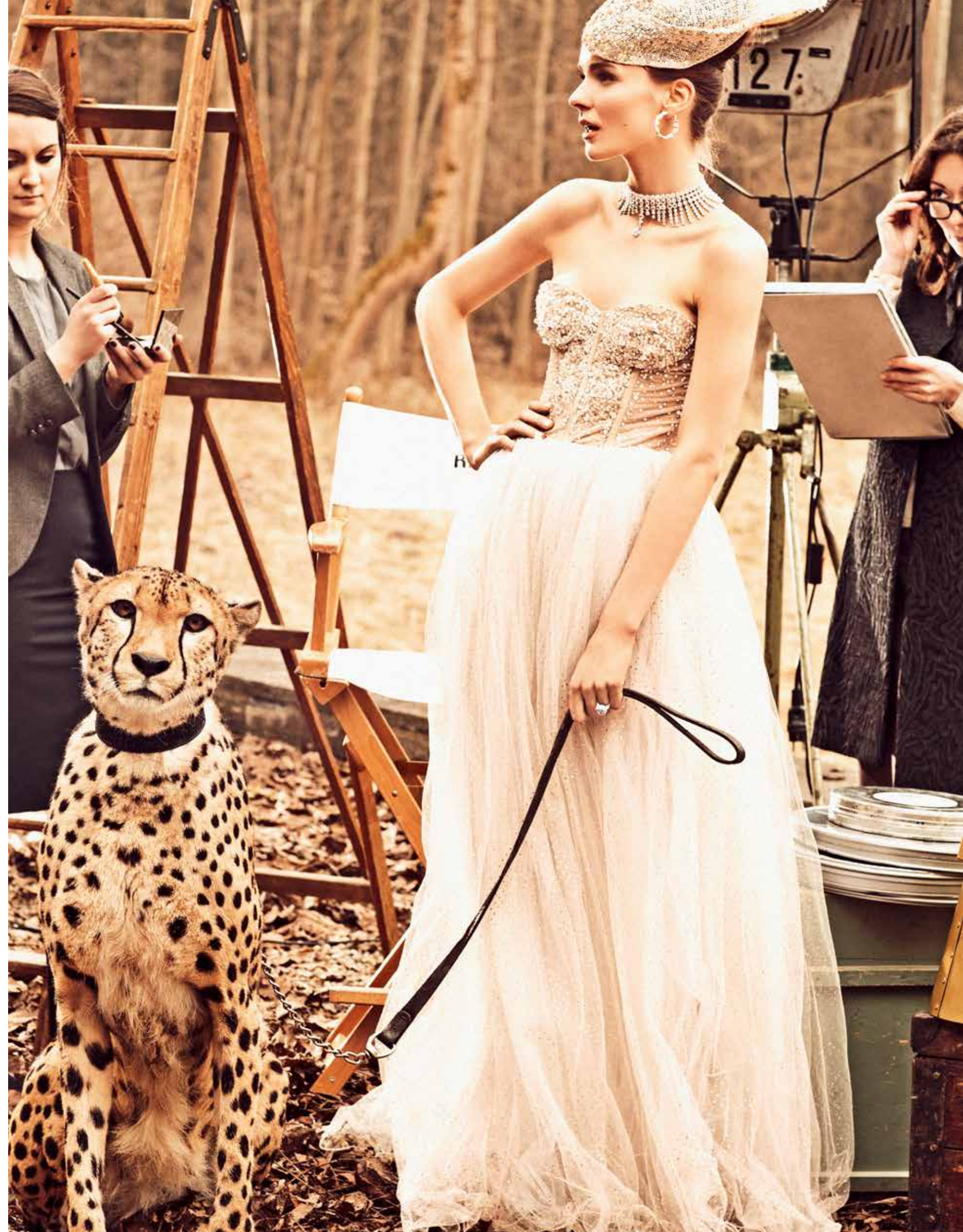
THE COLLECTION FEATURES A POPPY RING WITH PETALS SO DELICATE THAT ONE CAN ALMOST IMAGINE THEM SWAYING IN A SOFT SUMMER BREEZE. THE ROMANTIC SELECTION OF SPARKLING COCKTAIL RINGS FEATURES FINE GEMSTONES AND PRECIOUS STONES – PARAÍBA TOURMALINES, KUNZITES, SPINELS, SAPPHIRES AND EMERALDS – ALL ENHANCED WITH A VERY SPECIAL CHOPARD “DIAMOND RIBBON” SETTING. A RIBBON FULLY PAVED WITH DIAMONDS THAT WRAPS AROUND YOUR FINGER AND CAPTURES YOUR GEMSTONE.





EPITOMISING A PERFECT ALLIANCE OF BEAUTY, PURITY AND MYSTERY, AS WELL AS A SYMBOL OF ULTIMATE LUXURY AND ETERNAL LOVE, THE DIAMOND IS ALSO, AS CAROLINE SCHEUFELE LOVES TO SAY, “A GIRL’S BEST FRIEND”. ONE OF THE CENTRAL PIECES IN THIS NEW COLLECTION IS INDEED A MAJESTIC 18-CARAT WHITE GOLD CHOKER SET WITH A 5-CARAT PEAR-SHAPE ROSE-CUT DIAMOND AND 284 ROSE-CUT DIAMONDS TOTALLING ALMOST 183 CARATS. A PURE DELIGHT.

THE RED CARPET 2013 COLLECTION IS AN OPEN DECLARATION OF LOVE CELEBRATING THE FIFTEEN YEARS OF CHOPARD’S ONGOING ROMANCE WITH THE CANNES FILM FESTIVAL.











FOLLOW CHOPARD IN CANNES

CHOPARD RAISES THE CURTAIN ON ITS FIRST TUMBLR PLATFORM AND INVITES YOU TO FOLLOW ITS FOOTSTEPS ON THE RED CARPET.

SEE YOU AT [CHOPARDREDCARPET.TUMBLR.COM](http://CHOPARDREDCARPET.TUMBLR.COM)

*"There is definitely a synergy between  
cinema and the world of jewellery:  
a world of dreams."*

*Caroline Schenfele*











1

A FINE RUBELLITE AND  
DIAMOND NECKLACE

Designed as an undulating row of pavé-set diamonds,  
suspending an exceptional pear-shaped rubellite  
weighing 123.24 carats.

[817228-9001]





2

### A SUBLIME PAIR OF GEM-SET EARRINGS

The earrings set with oval-shaped tanzanites weighing together 17.50 carats, each within a colourful gemstone surround to the similarly set surmount.

[849374-1001]



3

### A STUNNING PAIR OF KUNZITE AND GEM-SET EARRINGS

Set with two oval-shaped kunzites weighing together 47.36 carats, within an openwork diamond surround, to the gem-set cascade and similarly set surmount.

[849314-1001]





4

# A DELECTABLE ARTICHOKE RING

Designed as a purple globe artichoke  
with pavé-set tsavorite and amethyst leaves.

[829233-1001]



5

# A PRECIOUS POPPY POD RING

Designed as a pavé-set tsavorite poppy seed pod with  
lazulite detail, to the diamond and gem-set floral motif top.

[829244-1001]





6

A MAGICAL  
MUSHROOM RING

Designed as an *Amanita Muscaria* mushroom  
with ruby and diamond-set top to the polished red gold stem.

[829192-5001]



7

A CAPTIVATING  
MUSHROOM RING

Designed as a *Chanterelle* mushroom, pavé-set with  
yellow diamonds to the white diamond border.

[829194-5001]



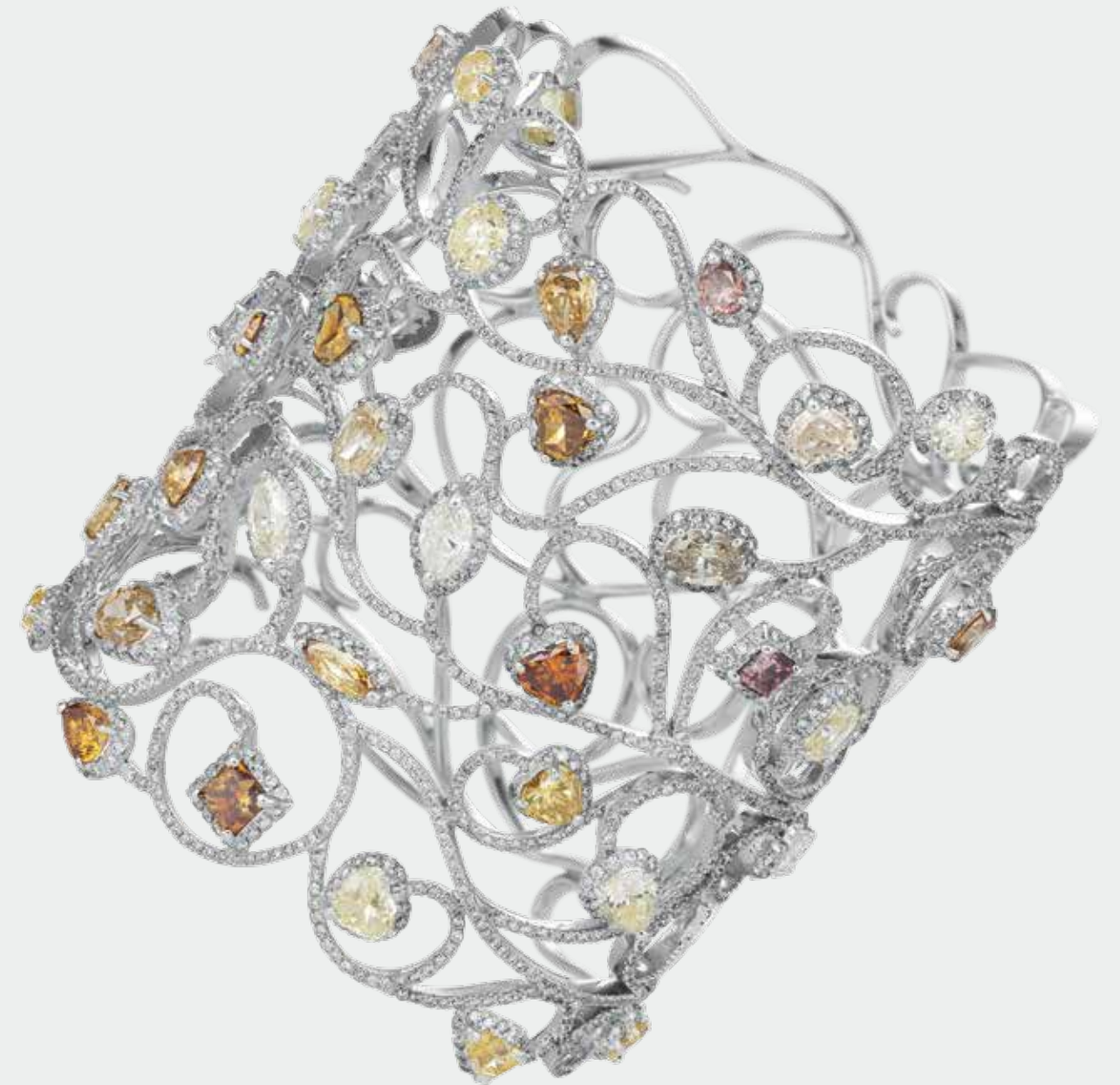


8

### A LUMINOUS YELLOW DIAMOND RING

The fine pavé-set diamond lines, spiralling upwards to the summit of shimmering light: a round brilliant-cut fancy intense yellow diamond weighing 9.37 carats.

[820528-1001]



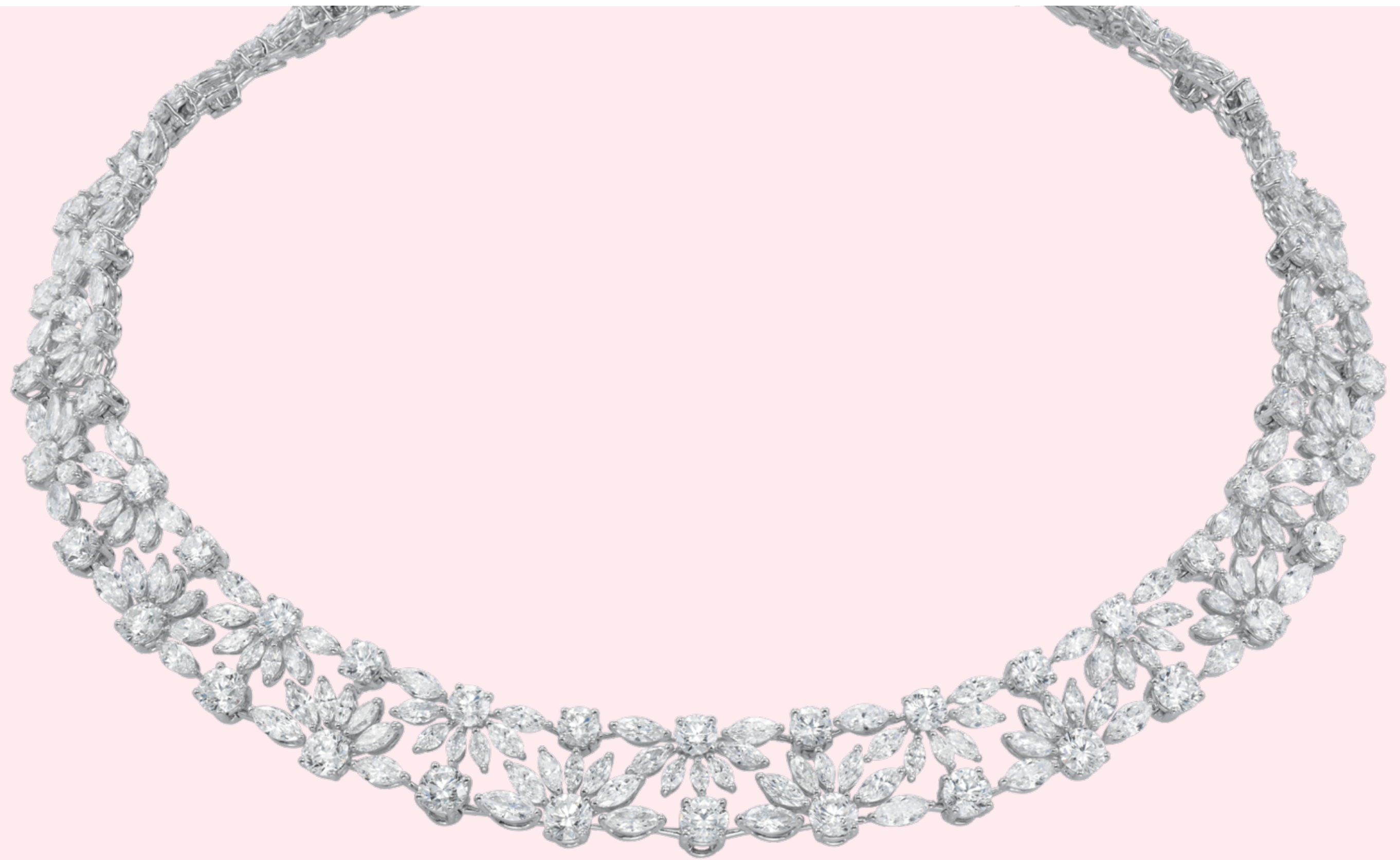
9

### AN EXQUISITE FANCY COLOURED DIAMOND BRACELET

Of openwork design, the stylised pavé-set diamond vines twining around the wrist to the fancy coloured diamond flower buds.

[859278-1001]





10

A DIVINE DIAMOND  
NECKLACE

Of openwork design, set with a series of diamond-set  
rising sun motifs with round diamond detail.

[819375-1001]





11

# AN ELEGANT PAIR OF EMERALD AND DIAMOND EARRINGS

Of openwork design, set with two round-shaped emeralds weighing 22.66 carats and 24.86 carats within a briolette diamond surround to the similarly set fluted line and surmount.

[849277-9001]



12

# A CHARMING PAIR OF EMERALD AND DIAMOND EARRINGS

Set with two heart-shaped emeralds weighing together 14.26 carats, to the entwined openwork pavé-set diamond ribbon surround and surmount.

[847853-9001]





13

TWO LOVELY PAIRS OF KUNZITE  
AND SAPPHIRE EARRINGS

Each pair of earrings set with heart-shaped kunzites 44.65 carats  
total or sapphires 13.63 carats total, to the entwined openwork  
pavé-set diamond ribbon surround and surmount.

[847853-1005]



14

[847853-1004]





15

A SPLENDID SAPPHIRE  
AND DIAMOND RING

Set with a pear-shaped sapphire weighing 33.74 carats,  
to the pear-shaped diamond shoulders  
and pavé-set diamond band.

[820722-1001]



16

AN ELEGANT PAIR OF SAPPHIRE  
AND DIAMOND EARRINGS

Set with four pear-shaped sapphires weighing together 50.25 carats,  
each within a pavé-set diamond surround  
to the round diamond spacers.

[849269-3001]





17

# A CAPTIVATING TANZANITE SET

The necklace designed as a colourful gem-set ribbon  
of lace suspending a briolette tanzanite weighing 69.66 carats.  
Ring and bracelet en suite.

[859247-1001]



18

[829247-1001]



19

[819247-1001]





20

A STYLISH PAIR  
OF DIAMOND EARRINGS

Each set with two pear-shaped rose-cut diamonds  
with pavé-set diamond tulip caps to the  
similarly set surmount.

[840410-1001]



21

A FINE  
DIAMOND SAUTOIR

Set with a series of pavé-set diamond pink frosted  
spheres to the delicate rose-cut diamond chain.

[817192-9201]





A LOVELY CULTURED PEARL  
AND RUBELLITE SET

The necklace set with a series of black cultured pearls with diamond detail  
suspended from a line of alternating round rubellites and diamonds.  
Earrings en suite.



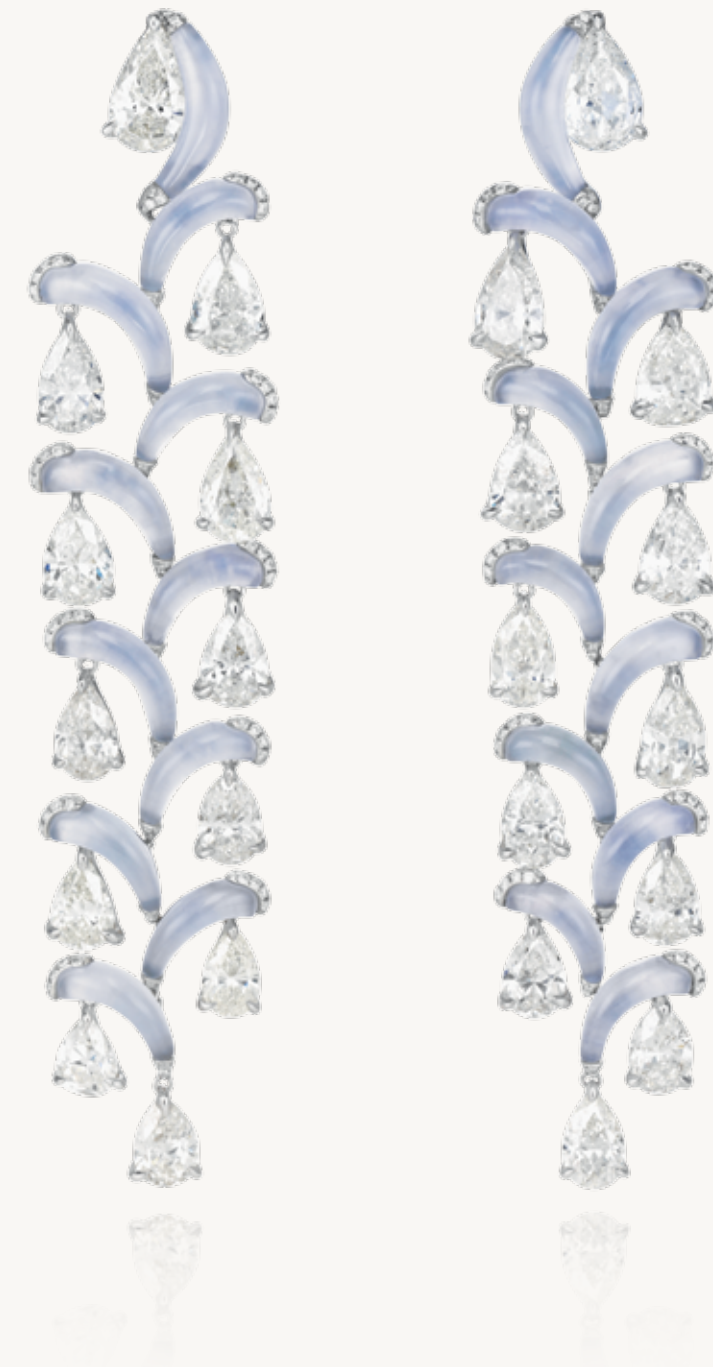


23

A DIVINE PAIR OF NATURAL PEARL  
AND DIAMOND EARRINGS

Set with two natural pearls weighing 41.16 carats  
and 32.18 carats, to the interlaced diamond set lines  
and pearl surmounts.

[839280-1001]



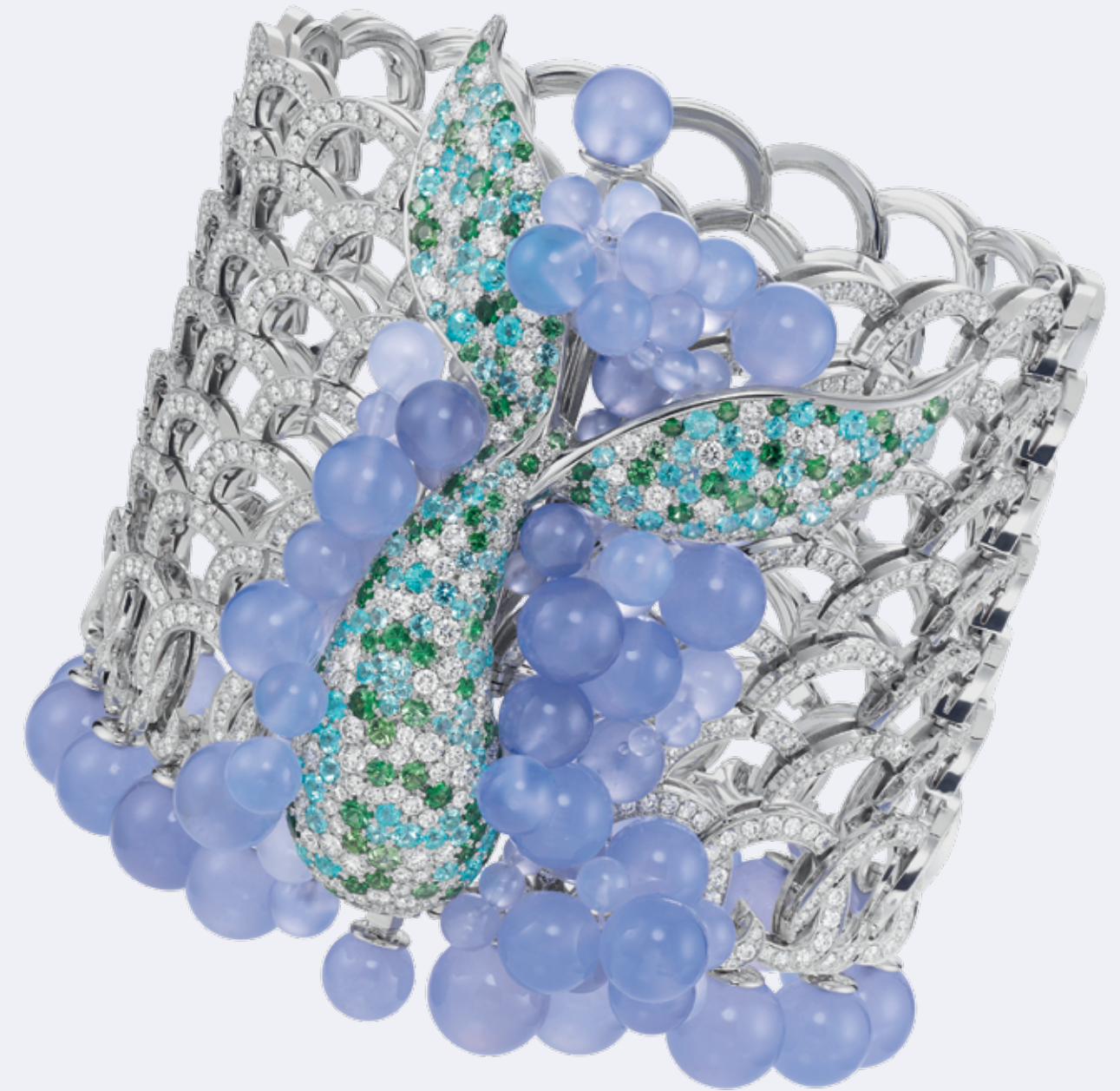
24

AN EXQUISITE PAIR OF JADEITE  
AND DIAMOND EARRINGS

Designed as delicate pale lavender vines each suspending  
a shimmering pear-shaped diamond to the similarly  
set surmounts.

[849268-1001]





25

AN UNDERWATER WORLD  
BRACELET

Waves of scintillating diamonds to the tsavorite and  
emerald tail swimming through a sea of blue chalcedonies.

[859342-1001]





26

THREE ENCHANTING  
GEM-SET RINGS

Each ring set with a pear-shaped kunzite 65.62 carats,  
lavender spinel 15.07 carats or Paraiba tourmaline 22.89 carats,  
to the entwined pavé-set diamond ribbon surround and band.

[829174-1002]

27

[829239-1001]

28

[829307-1002]





29

A FRESH FLOWER  
NECKLACE

Designed as a garland of Paraiba tourmaline flowers,  
within tsavorite garnet and white pearl foliage.

[819346-1001]





30

A STYLISH PURPLE SAPPHIRE  
AND DIAMOND SET

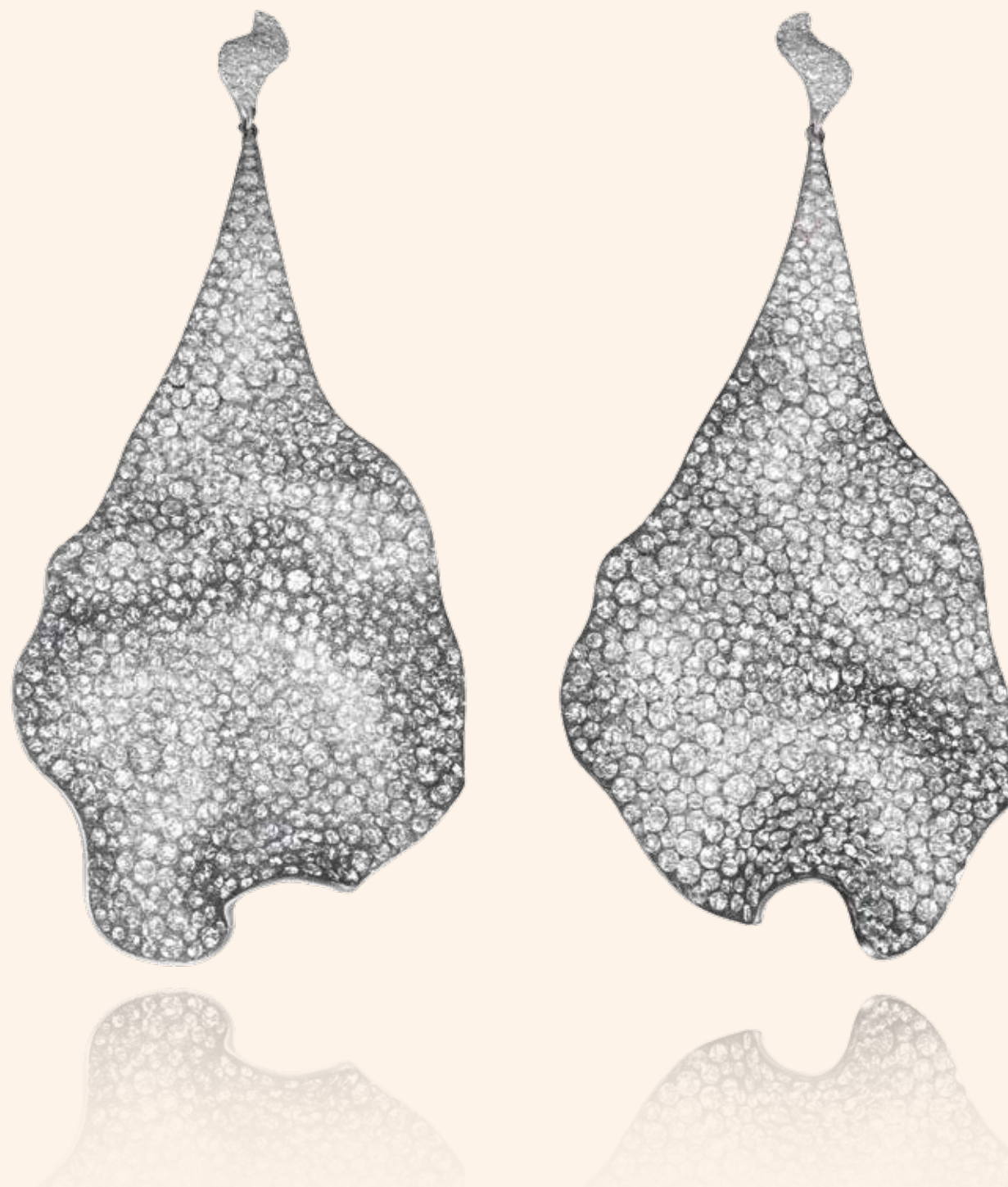
The earrings designed as two stylised leaves pavé-set with purple sapphires to the similarly set diamond surmounts. Ring en suite.

[847150-3002]



[827151-3001]





31

# A CONTEMPORARY DIAMOND SET

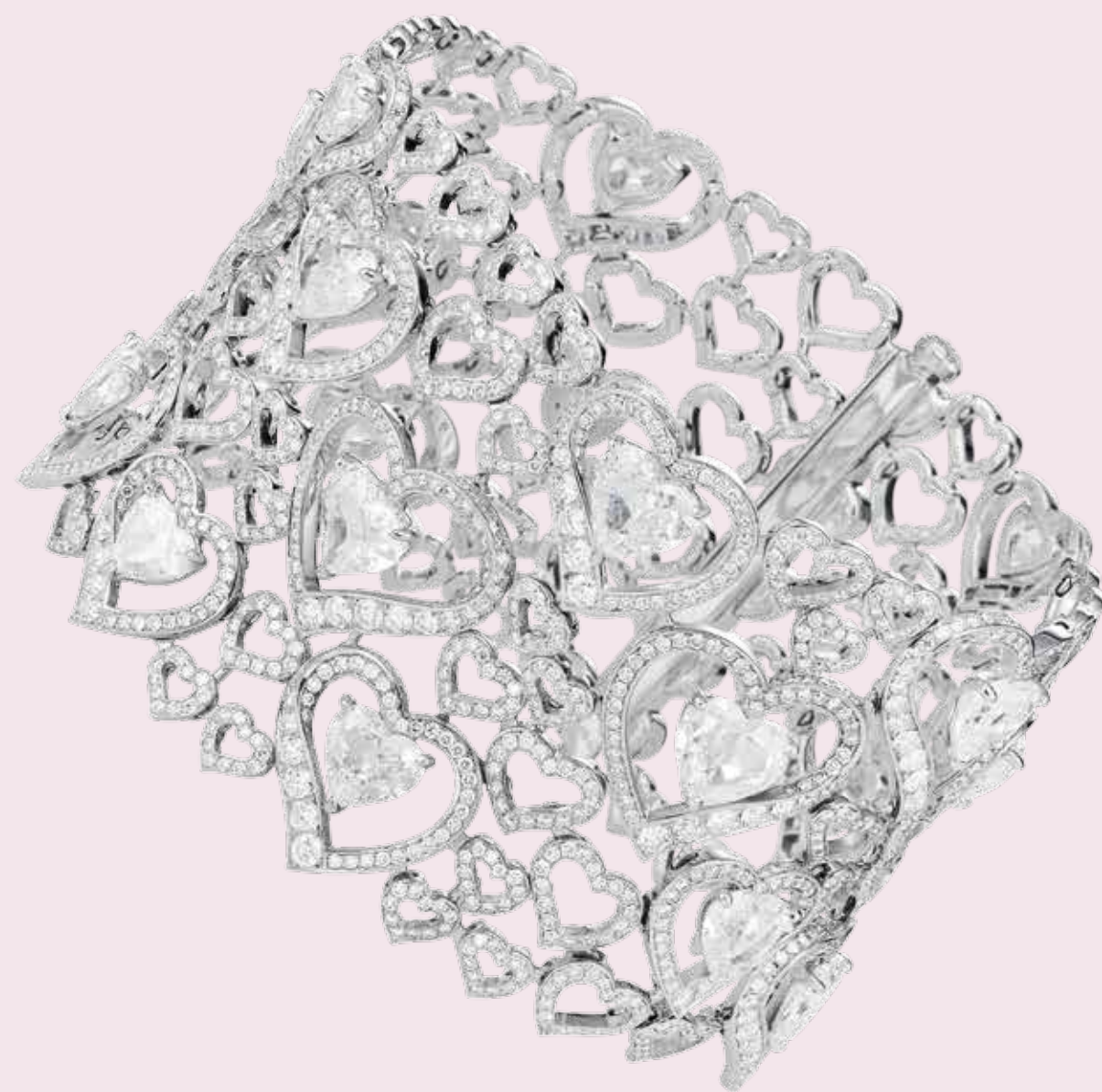
The earrings designed as two stylised leaves pavé-set with brilliant-cut diamonds to the similarly set surmounts. Ring en suite.

[847150-3001]



[827150-3002]



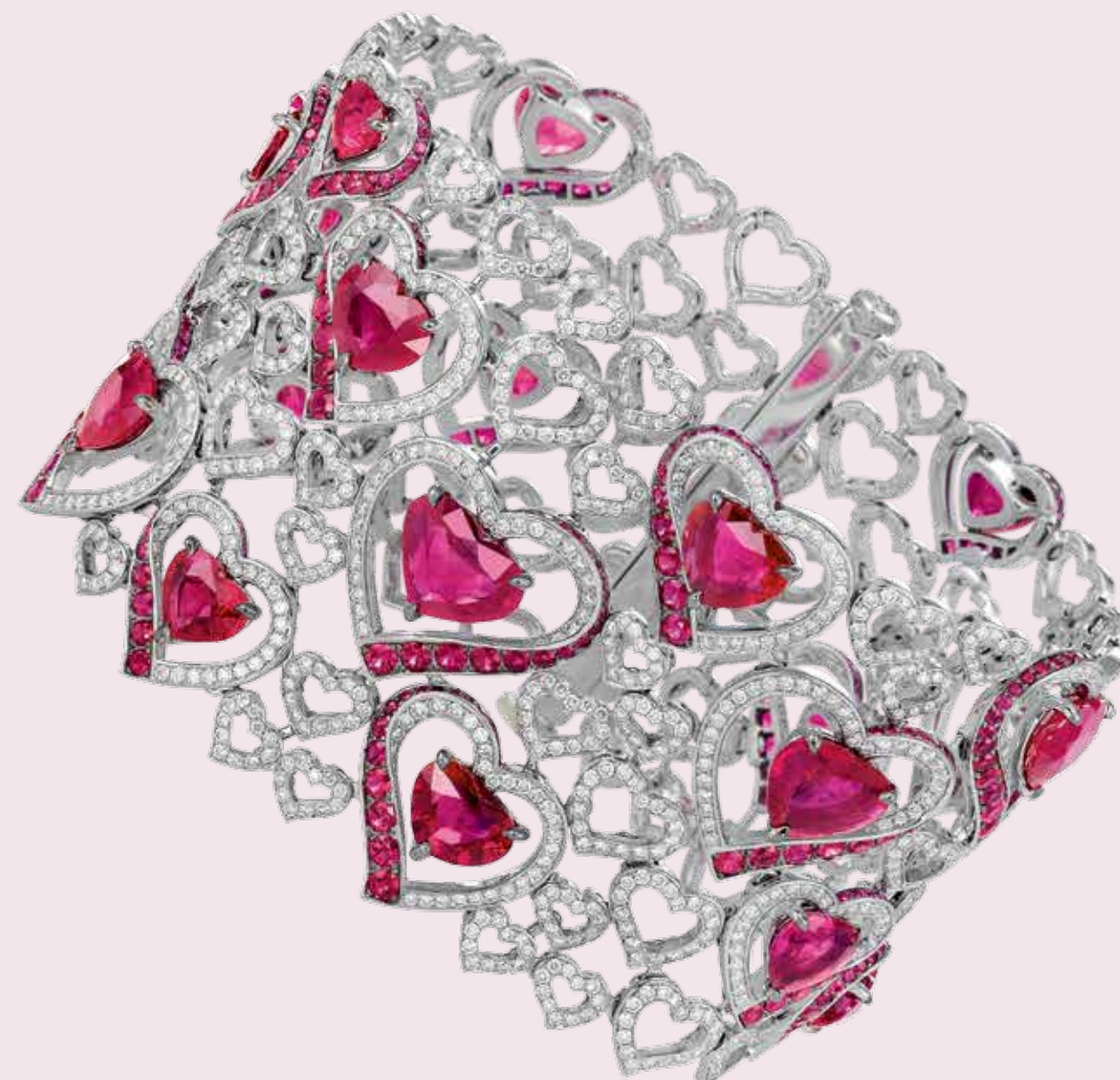


32

## TWO ENAMOURING RUBY AND DIAMOND BRACELETS

Each of openwork design, the ribbon of pavé-set diamond hearts highlighted by scintillating heart-shaped diamonds or heart-shaped rubies.

[859281-1001]



33

[859281-1002]



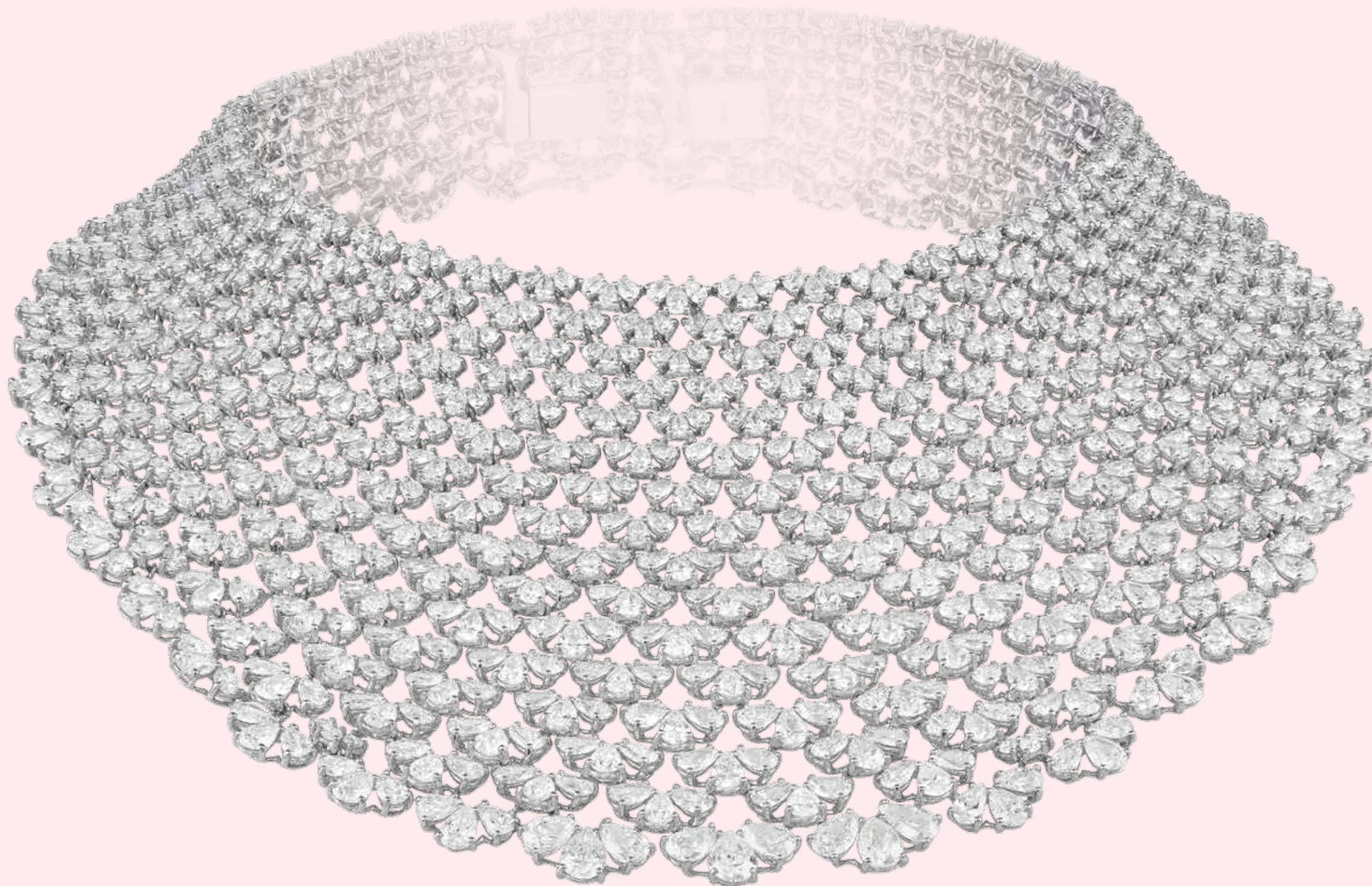


34

A SPECTACULAR  
DIAMOND RING

The pear-shaped diamond weighing 23 carats, D colour, IF clarity,  
to the pavé-set diamond band.

[825500-1375]



35

AN IMPRESSIVE  
DIAMOND NECKLACE

Of openwork bib design, set with graduated interlaced  
pear-shaped diamond links.

[819276-1001]





36

A STRIKING EMERALD  
AND DIAMOND SET

The necklace designed as a fringe of pear-shaped  
emeralds on a delicate rose-cut diamond chain.  
Earring en suite.

[939259-9001]





37

A SUBLIME EMERALD  
AND DIAMOND RING

Set with an emerald-cut emerald weighing 17 carats,  
to the half-moon diamond shoulders and pavé-set  
diamond band.

[820690-1001]



38

A MAGNIFICENT EMERALD  
AND DIAMOND BRACELET

Designed as three rows of emerald-cut emeralds  
weighing together 81.39 carats, within a pavé-set  
diamond surround, to the fancy-cut diamond spacers.

[859271-1001]





39

AN ELEGANT EMERALD  
AND DIAMOND SET

The necklace designed as a delicate pear-shaped diamond line  
to the graduated emerald-cut emerald and diamond fringe.  
Earrings en suite.

[849356-1001]



[819356-1001]





[849336-9001]



40

A FABULOUS  
FLORA SET

The necklace designed as a bushel of red currants  
with twining tsavorite leaves suspending luscious spinel berries.  
Earrings en suite.

[819336-9001]





41

# A PRECIOUS POPPY SET

The necklace designed as a flowering poppy with pavé-set ruby petals and similarly set bud, to the golden sheaves of wheat. Ring en suite.

[829236-9001]



42

[819236-9001]









44

# A MAGESTIC DRAGON SET

The bracelet designed as a flying dragon pavé-set with brilliant-cut white, grey and milky diamonds with gem-set detail to the green turquoise beard and tail. Earrings en suite

[850324-1001]



45

[830406-1001]





46

# A DELICATE PAIR OF DIAMOND EARRINGS

Designed as scintillating chandeliers of briolette  
and triangular-cut diamonds to the similarly set surmounts.

[réf. 839267-1001]



47

# A GORGEOUS PAIR OF EMERALD AND DIAMOND EARRINGS

Set with two pear-shaped cabochon emeralds weighing together 35.57 carats,  
to the diamond-set braided motifs and emerald surmounts.

[56841229-101]





48  
A SPLENDID  
DIAMOND RING

Set with a radiant-cut diamond weighing 28.07 carats,  
to the pavé-set diamond band.

[820689-1001]



49  
A STUNNING PAIR OF EMERALD  
AND DIAMOND EARRINGS

Set with two pear-shaped emeralds weighing 18.33 carats  
and 19.26 carats to the pear-shaped diamond surmounts  
within pavé-set diamond surround.

[840411-1001]





50

## TWO FABULOUS PAIRS OF GEM-SET EARRINGS

Each precious flower set at the centre with circular-shaped rubellites 23.72 carats total or tanzanites 42.59 carats total, to the fine gemstone petals, cascade and surmount.

[840383-9001]



51

[840380-9001]





52

A GLITTERING  
FLOWER BROOCH

Designed as a majestic magnolia flower with a cabochon rubellite heart,  
to the delicate ruby and gem-set petals.

[909338-9001]



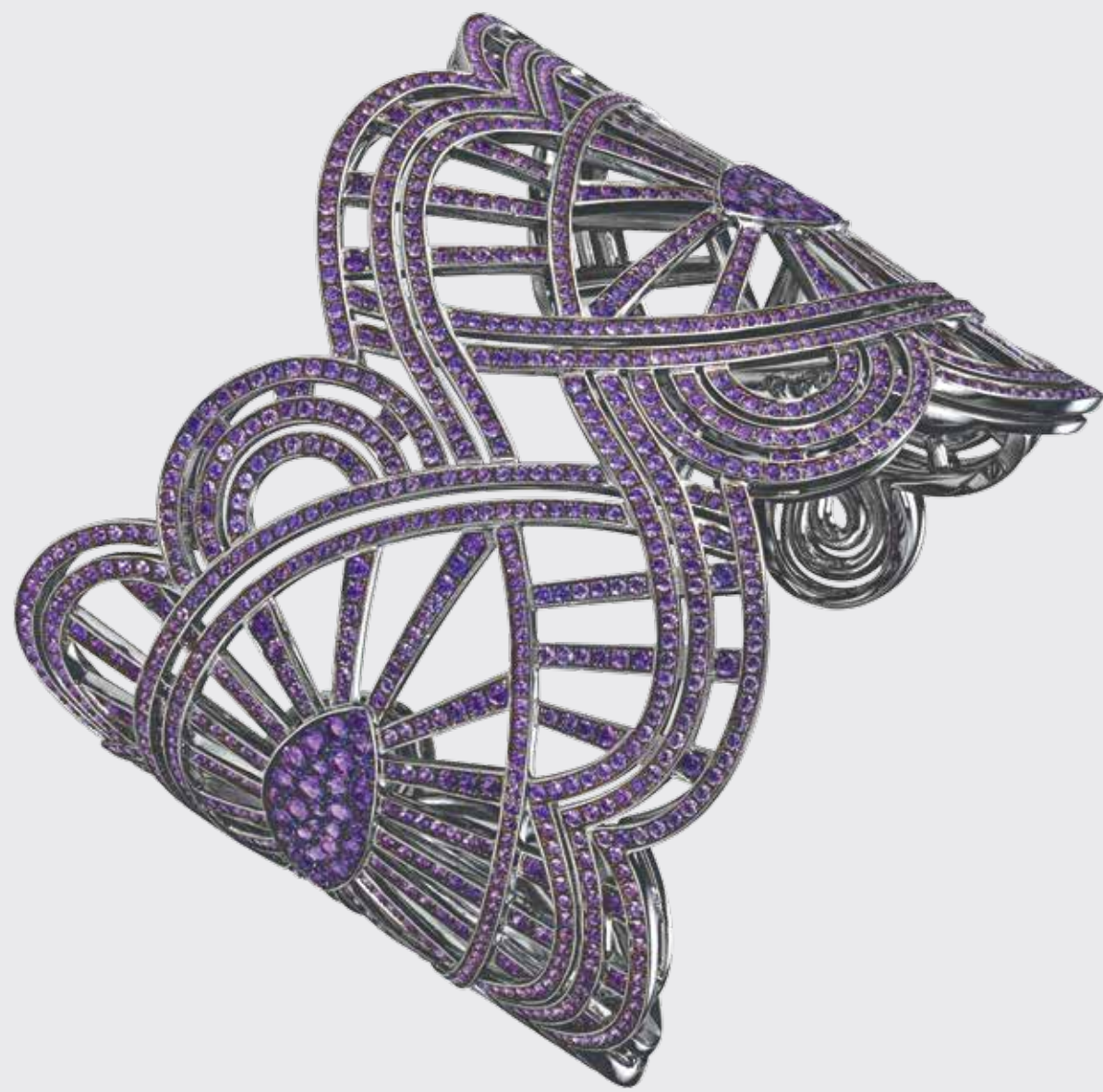
53

A MYSTICAL  
BRACELET

Designed as an interwoven tapestry of rubies, Paraiba tourmalines,  
diamonds and precious gems, encircling the wrist  
with «colours of the wind».

[859345-1001]



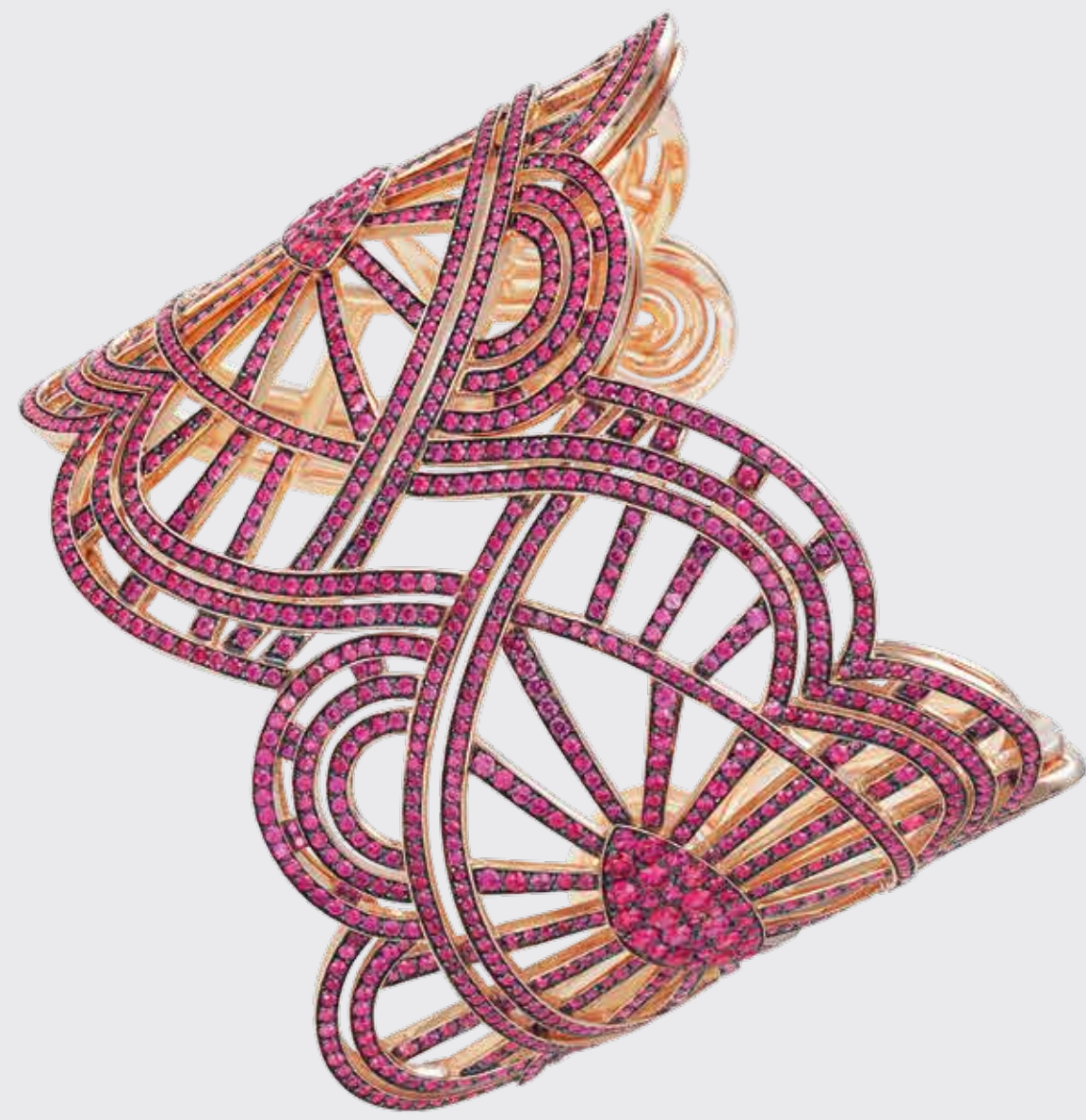


54

TWO STYLISH AMETHYST  
AND RUBY BRACELETS

Each of openwork design, the pavé-set ribbon of lace in amethyst  
or ravishing rubies, delicately encircling the wrist.

[859330-9002]



55

[859330-5001]





56

A LADY'S "L'HEURE DU DIAMANT"  
WATCH

The diamond flower dial set within a round brilliant-cut diamond bezel to the intricate diamond-set bracelet.

[104331-5001]



57

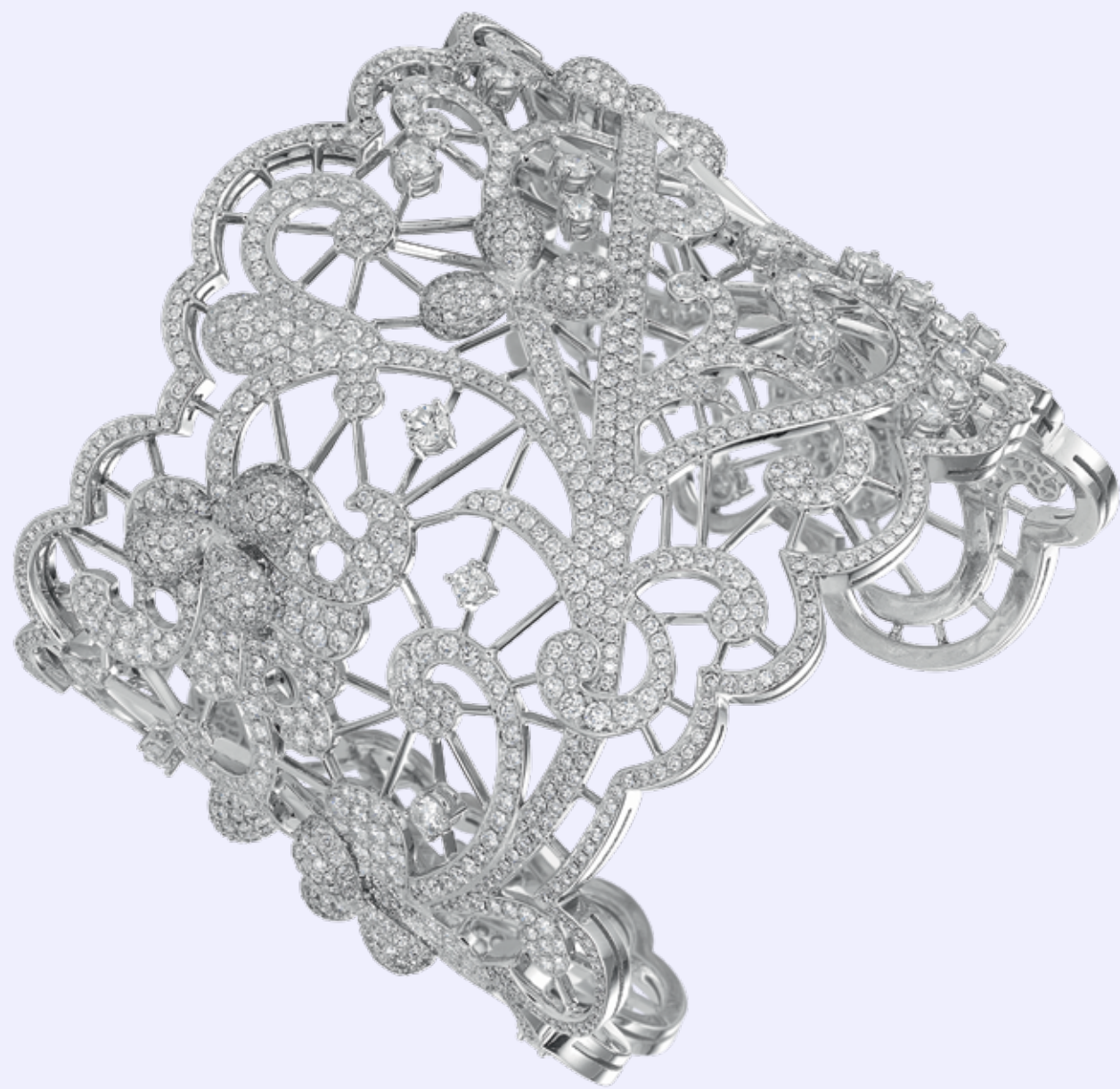
AN EXQUISITE EMERALD  
AND DIAMOND RING

The cushion-shaped emerald weighing 30.07 carats, set within  
a meadow of diamond flowers to the diamond-set band.

[820712-1001]





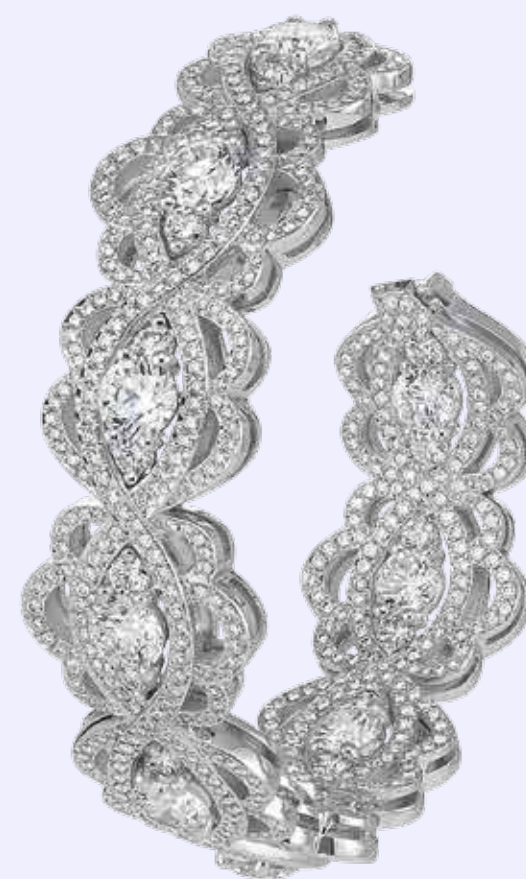


58

AN ENCHANTING  
DIAMOND BRACELET

Of openwork lace design, the diamond-set floral motifs  
with undulating diamond borders delicately encircling the wrist.

[859329-1001]



59

A PAIR OF DELICATE  
DIAMOND EARRINGS

Each of intricate lace design pavé-set with diamond detail.

[839331-1002]



60

A SPLENDID SAPPHIRE  
AND DIAMOND NECKLACE

The cushion-shaped sapphire weighing 160 carats suspended  
from a graduated alternating cushion and pear-shaped diamond necklace.

[810397-1001]







61

AN IMPRESSIVE DIAMOND  
OWL WATCH

The diamond-set owl's face with grey guilloché  
watch dial eyes to the white leather bracelet.

[139307-1010]





62

AN OPULENT RUBY  
AND DIAMOND SET

The necklace designed as a delicate fringe of oval-shaped rubies  
and fancy-cut diamonds to the similarly set star motifs.  
Earrings en suite.

[939279-1001]





63

AN ELEGANT EMERALD  
AND DIAMOND SET

The necklace designed as a fringe of delicate diamond lines  
to the pear-shaped emerald 35.90 carats and diamond side pendant.  
Earrings en suite.

[939282-1001]





64

THE HAPPY SPORT  
“DIAMANTISSIMO” WATCH

A true work of art, the invisibly set diamond dial and case  
with twirling Happy Diamonds to the diamond link bracelet.  
Mechanical movement.

[274496-1001]





65

A SUBLIME  
DIAMOND SET

The necklace of openwork design, set with diamond floral motifs  
to the graduated diamond line and three pear-shaped diamonds.  
Earrings en suite.

[849377-1001]

[819377-1001]





66

A MAGNIFICENT  
DIAMOND SET

The necklace designed as a row of rose-cut diamonds with graduated fringe,  
suspending a pear-shaped diamond weighing 5.25 carats, D colour, IF clarity.  
Earrings en suite.



Cover and movie scenes    Esther Haase/Schierke  
Jewellery photographs    Stefan Vos

Red Carpet Catalogue no. 214-94104-0560

*Chopard*

© Le Petit-Fils de L.U.Chopard & Cie SA  
8, Rue de Veyrot 1217 Meyrin 2 Geneva  
Switzerland  
Tel. + 41 22 719 31 31 Fax + 41 22 719 31 35  
[www.chopard.com](http://www.chopard.com)

Printed in Italy, 2013



FESTIVAL DE CANNES  
**Official Partner**